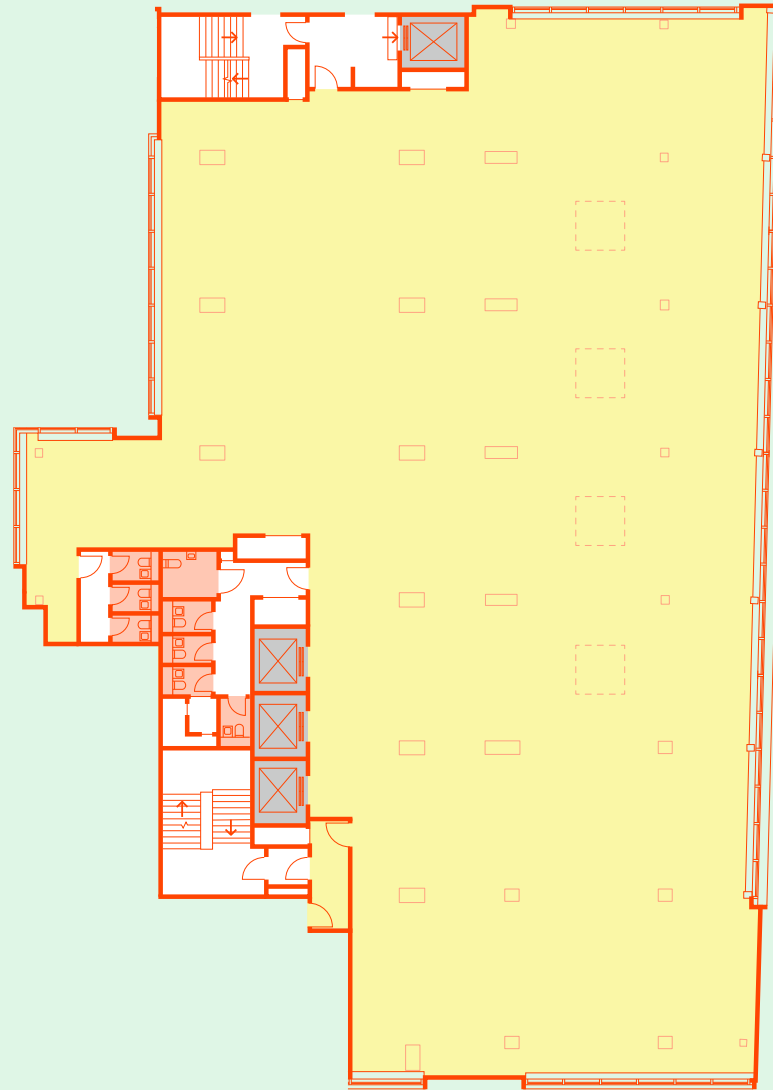
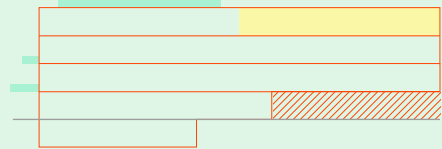


Met Building Floorplans

met

Part 3rd Floor

Office
9,720 ft²

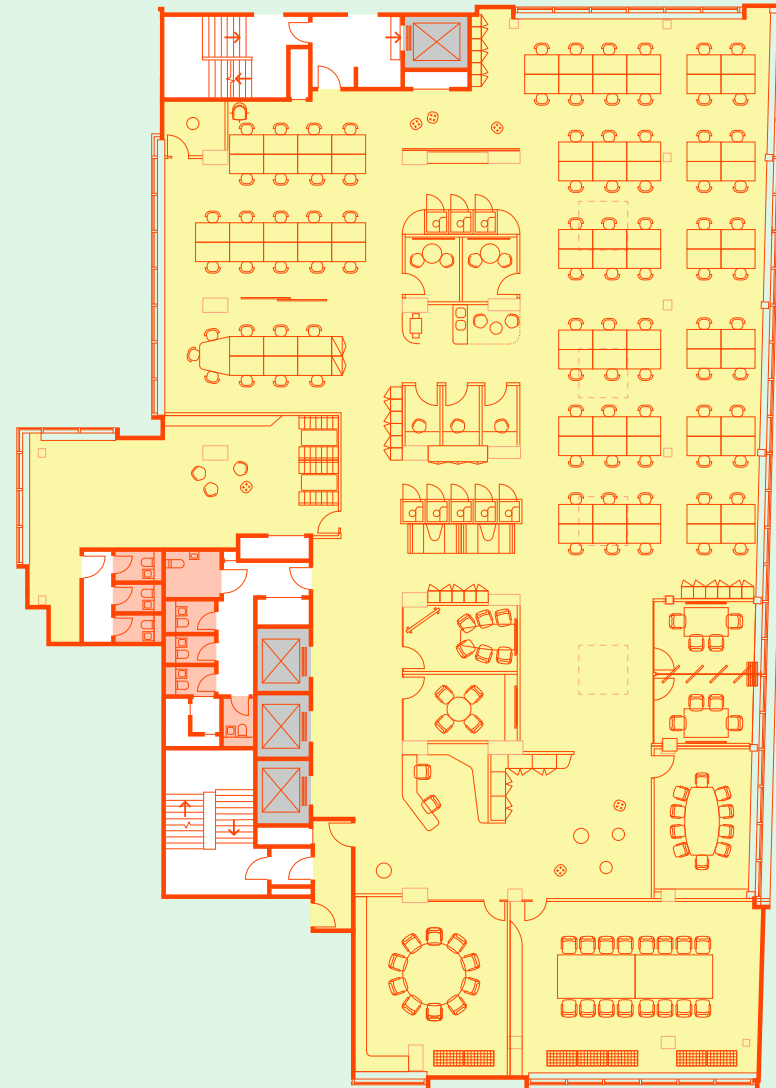
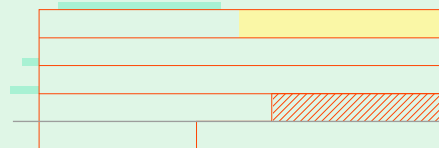


Tottenham Court Rd

- Office
- Core area
- Toilets
- Lift

Part 3rd Floor Indicative Spaceplan

Net Internal Area	9,720 sq ft
Density ratio	1:10 sqm
Workstations	88
16 Person Boardroom	1
10 Person Meeting room	2
6 Person Meeting room	4
4 Person Meeting room	3
2 Person Meeting room	2
Focus room	3
Breakout	1
Pods	8

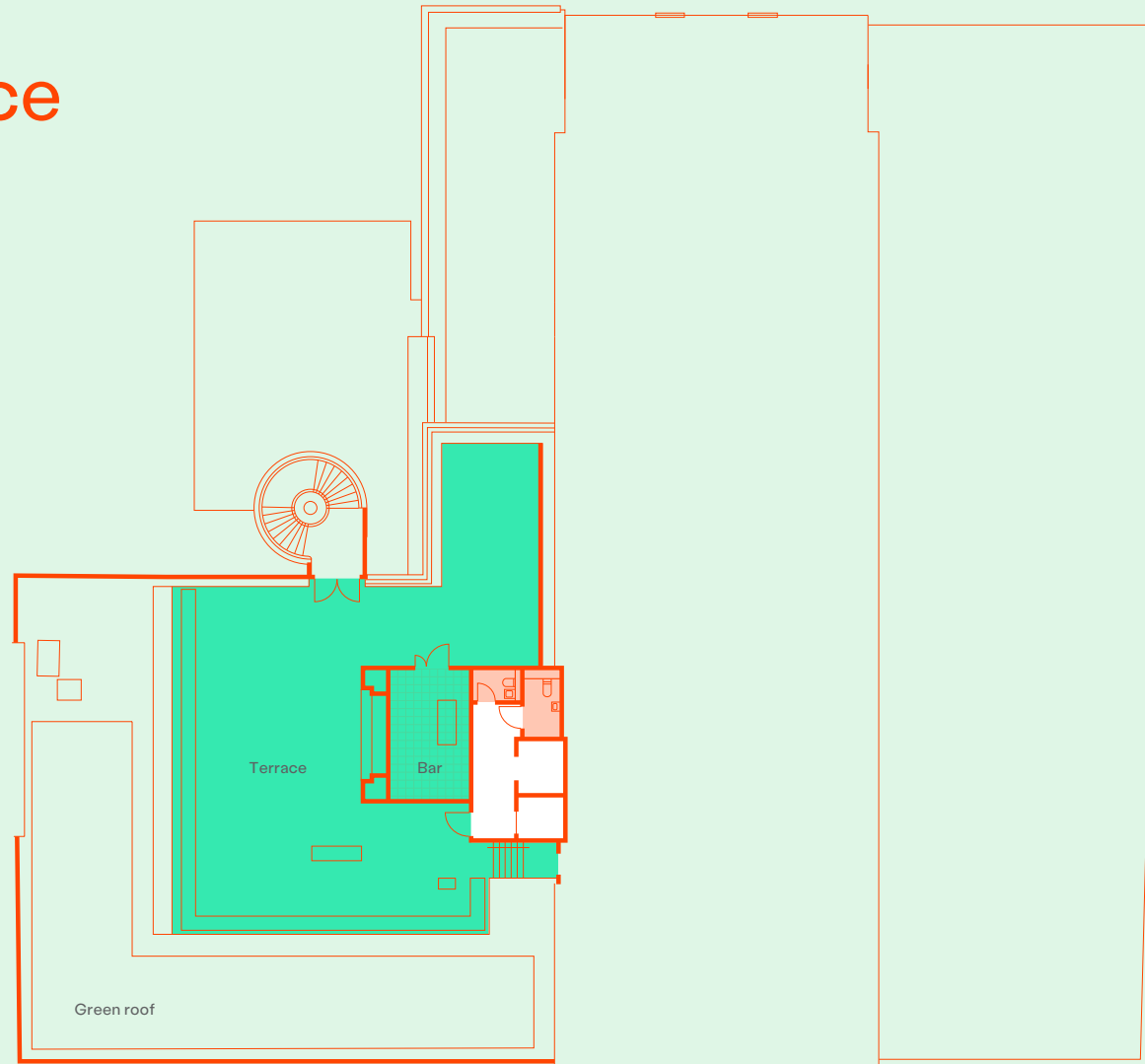
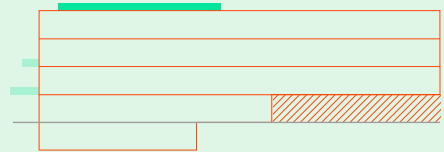


Tottenham Court Rd

- Office
- Core area
- Toilets
- Lift

Shared Roof Terrace on Level 4

Terrace
1,638 ft²



Tottenham Court Rd

- Core area
- Terrace
- Toilets

Basement

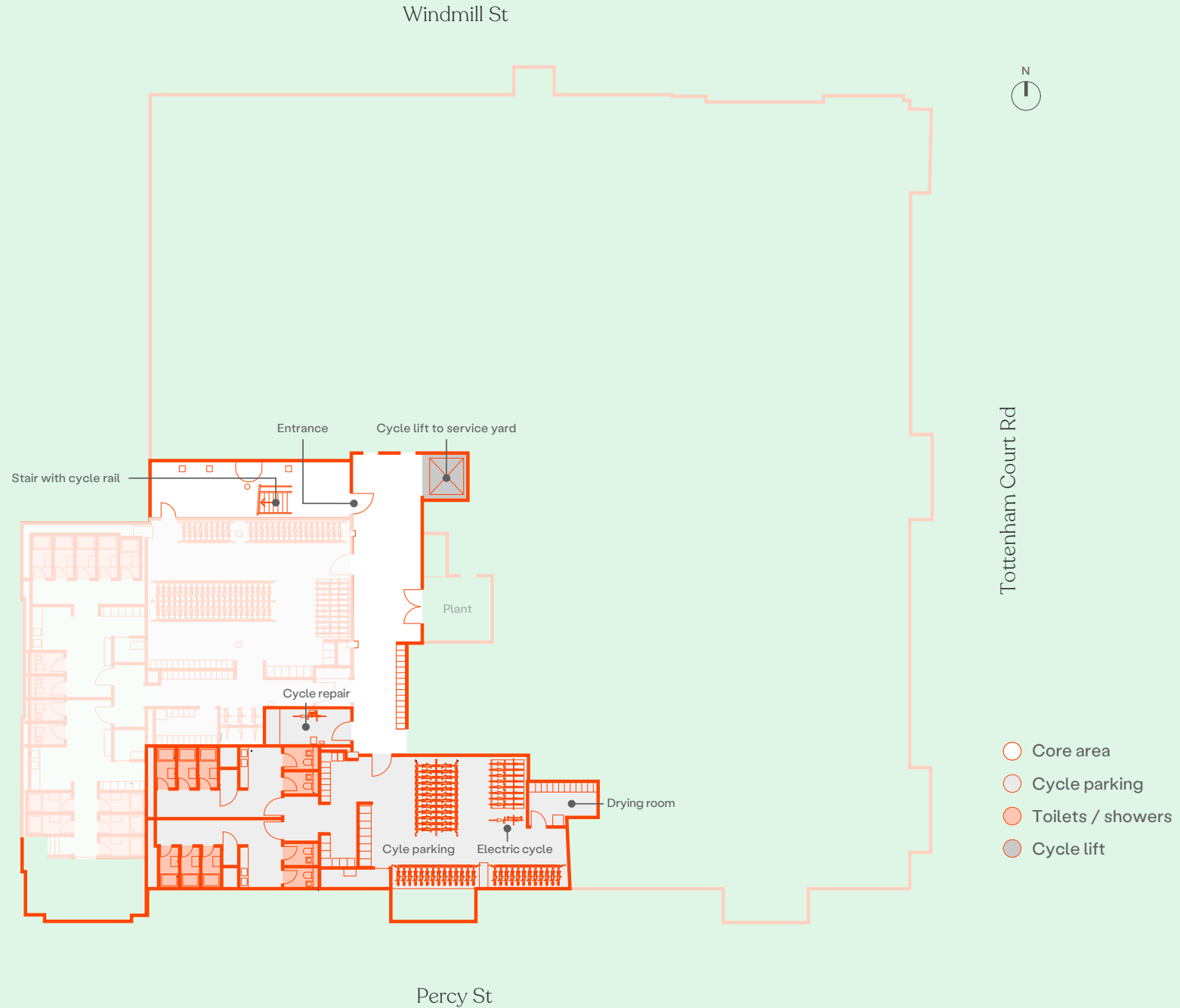
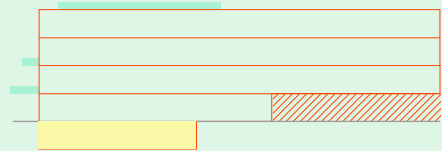
Cycle facilities

2,433 ft²

59
total cycle spaces

03
electric cycle spaces

108
Lockers



- Core area
- Cycle parking
- Toilets / showers
- Cycle lift