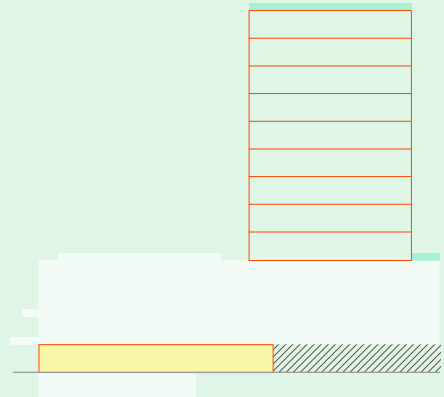


# Tower Floorplans

**met**

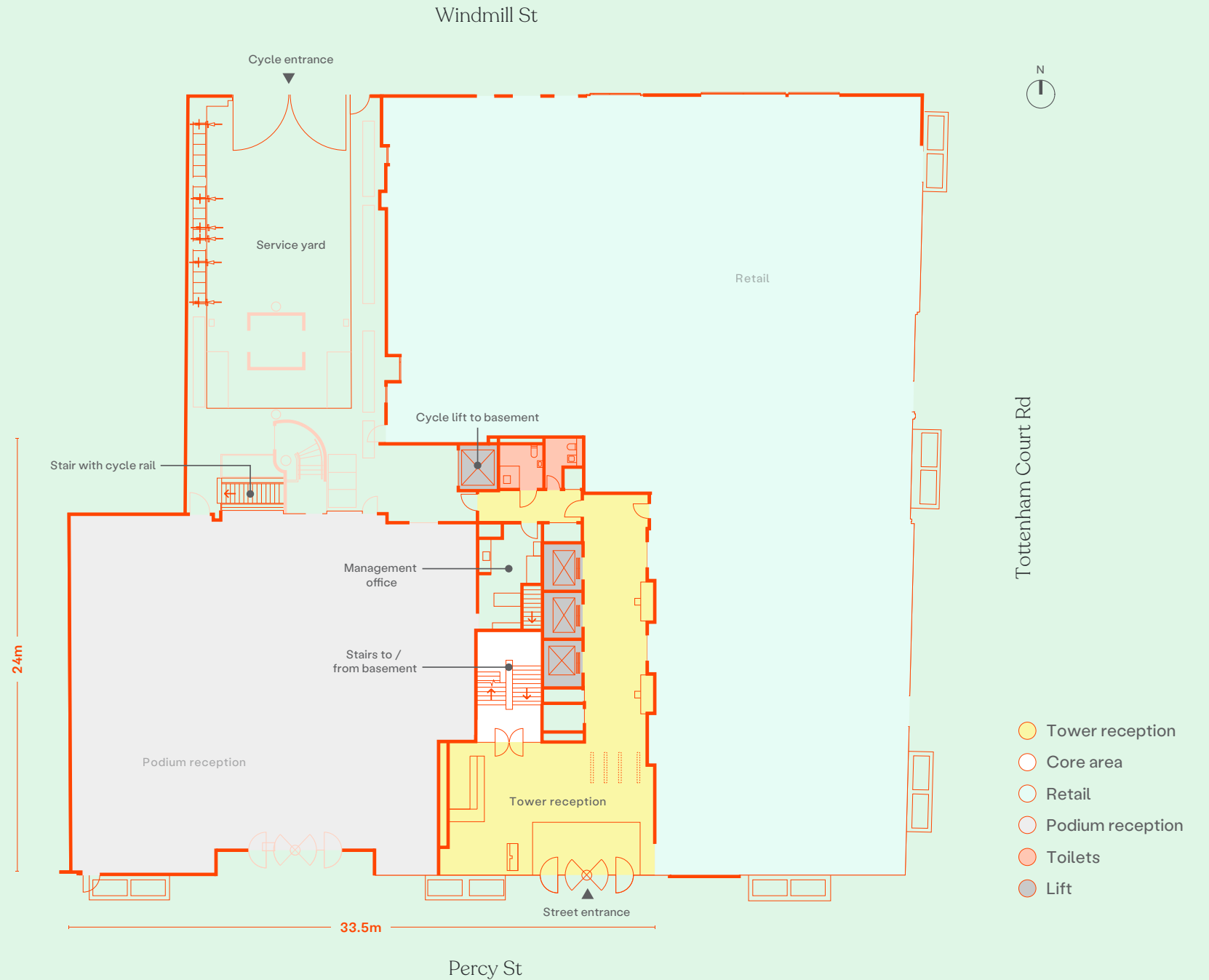
# Tower Ground floor

1,422 ft<sup>2</sup>



## Floorplans

G	4	5-12	The Met Lounge	B
---	---	------	----------------	---

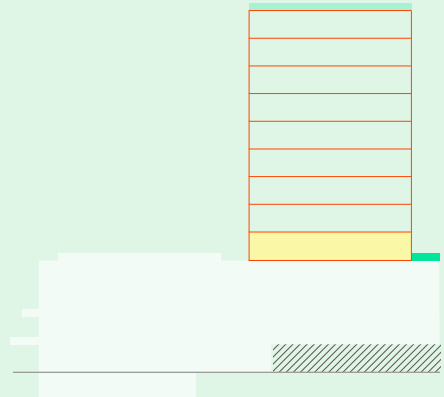


# Tower Floor 4

Office  
4,509 ft<sup>2</sup>

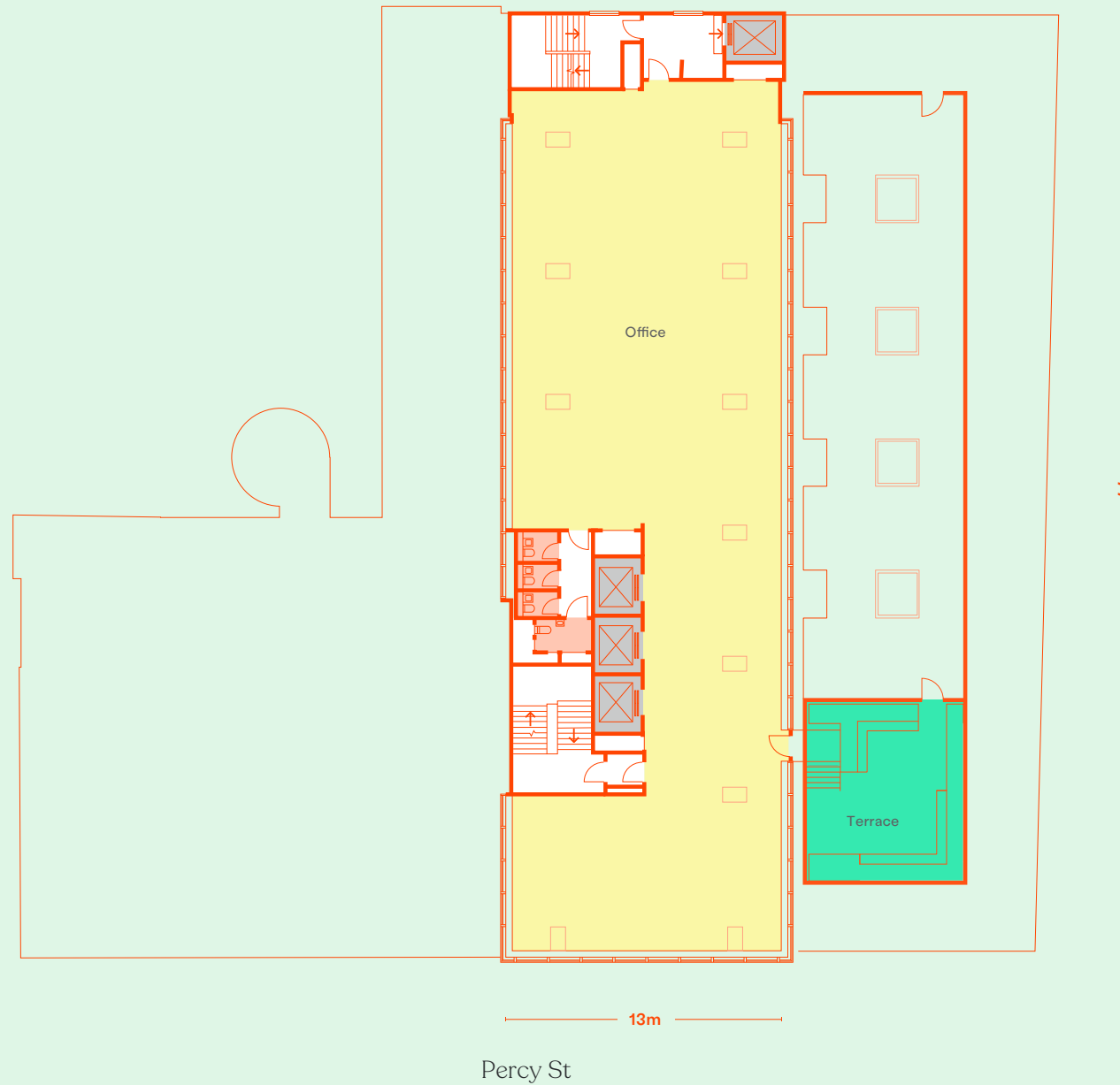
Terrace  
610 ft<sup>2</sup>

**Total**  
5,119 ft<sup>2</sup>



## Floorplans

G	4	5-12	The Met Lounge	B
---	---	------	----------------	---



Tottenham Court Rd

44m

13m

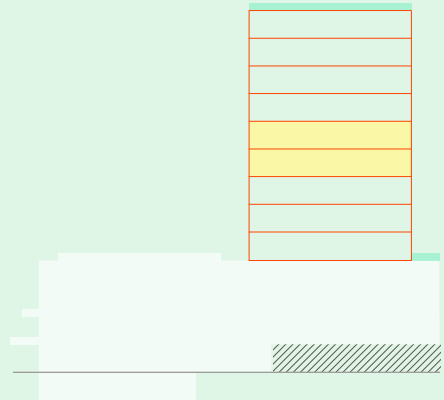
Percy St

- Office
- Core area
- Terrace
- Toilets
- Lift

# Tower Typical floor

F7  
4,473 ft<sup>2</sup>

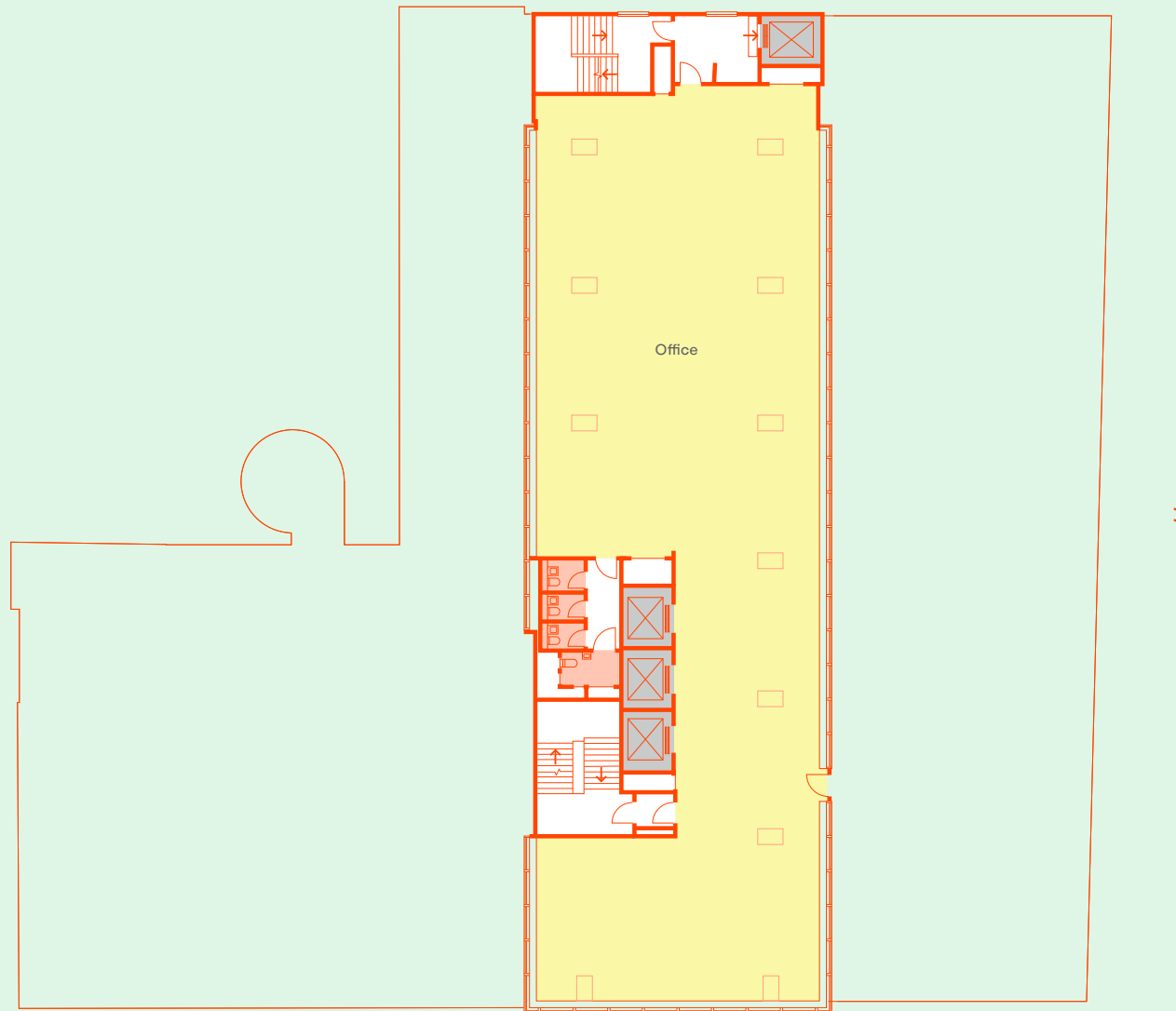
F8  
4,505 ft<sup>2</sup>



## Floorplans

G	4	5-12	The Met Lounge	B
---	---	------	----------------	---

Windmill St



Tottenham Court Rd  
44m

- Office
- Core area
- Toilets
- Lift

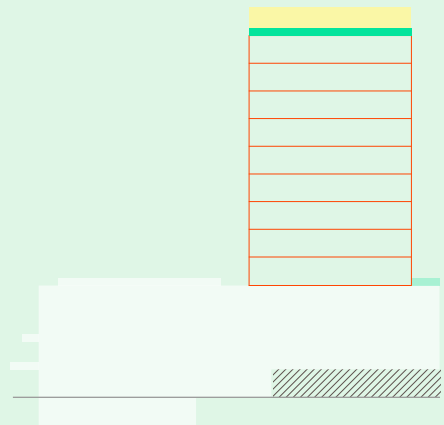
13m

Percy St

# Tower

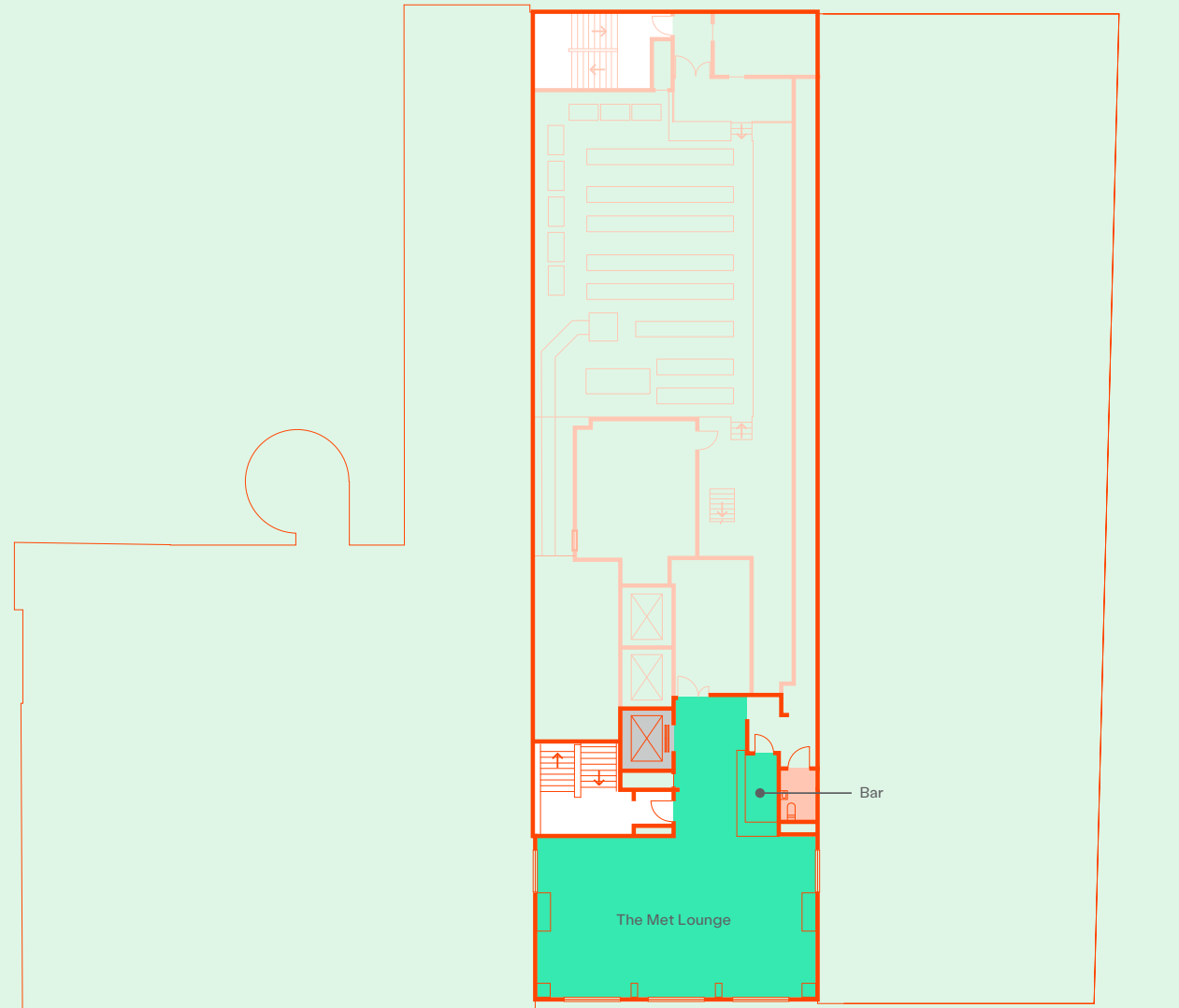
## The Met Lounge

Terrace  
1,088 ft<sup>2</sup>



### Floorplans

G	4	5-12	The Met Lounge	B
---	---	------	----------------	---



Tottenham Court Rd

44m

- Core area
- Terrace
- Toilets
- Lift

13m

# Tower Basement

## Cycle facilities

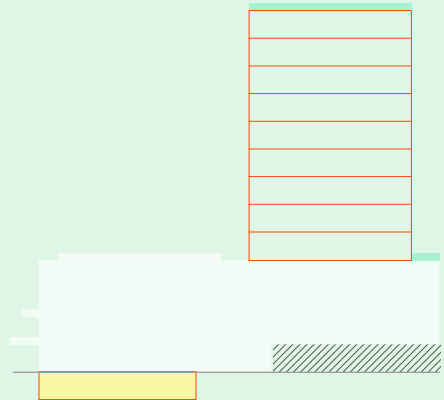
1,581 ft<sup>2</sup>

1 electric cycle space

24 folding cycle lockers

8 horizontal racks

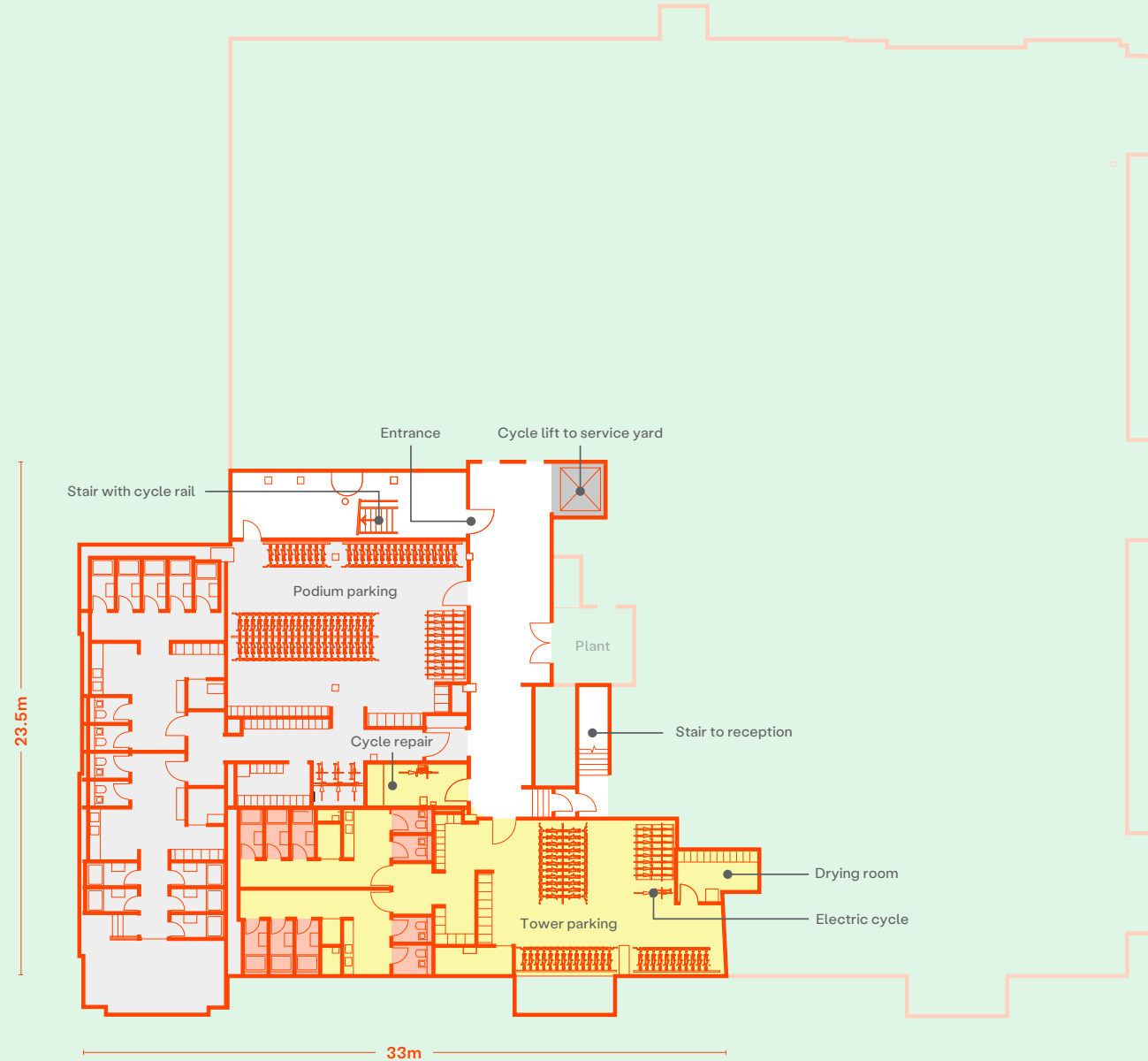
50 Vertical racks



## Floorplans

G	4	5-12	The Met Lounge	B
---	---	------	----------------	---

Windmill St



Tottenham Court Rd

- Tower cycle parking
- Core area
- Podium cycle parking
- Toilets / showers
- Cycle lift

Percy St